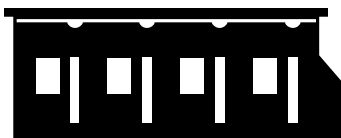




## Cost of Living Comparisons (2009)



### COST OF LIVING COMPARISONS

Student Services has estimated the associated living expenses with coming to UWA to give you a general idea of anticipated costs for a year. Overleaf you will find a comparison between the following:

- the average cost of **sharing a house or flat**,
  - the average cost of **living in residential college for 35 weeks**,
- and
- the average cost of **living at home**.

All estimates are based on the assumption that your University fees have been deferred until you have finished your degree, and take into account GST (Goods and Services Tax).

Remember, this pamphlet a guide only. You will need to personalise the expenses for yourself. In this respect, students undertaking courses in the following departments should refer to the relevant faculty handbook or contact the department direct to ascertain additional study costs.

**Computers:** Prior to buying a computer you may like to pick up a copy of a free brochure produced by the Minister of Fair Trading (Ph 1300 304 054). Alternatively if you have access to the worldwide web you can read the information “on-line” at: [www.docep.wa.gov.au](http://www.docep.wa.gov.au)

**Cars:** Owning and running even a small car can be a very expensive proposition. Not only do you have to consider petrol costs, but also for the following “hidden” expenses: insurance, registration, maintenance, repairs, and parking. Even with moderate kilometres, you should budget for at least \$25 per week for these “hidden” expenses. This does not take into account unexpected repairs, which can potentially be hundreds or thousands of dollars. The Ministry of Fair Trading has a good website dealing with buying and repairing vehicles at: [http://www.docep.wa.gov.au/motor\\_vehicles2/useful\\_information/publications/Publications.asp?section=resources](http://www.docep.wa.gov.au/motor_vehicles2/useful_information/publications/Publications.asp?section=resources)

The UWA Housing Service is an information service only. The information and contacts provided are to assist you in your search for accommodation and provide you with details of the services you may require. The information provided is compiled in good faith, and is intended as a guide only. UWA may not investigate the content of any information provided and does not endorse, guarantee, warrant, or recommend the accuracy of the information or necessarily subscribe to any such opinions or recommendations. UWA Housing Service does not profit in any way or sponsor any of the contacts listed, they are provided solely as a convenience to you. *This information in this publication is intended as a guide only and is subject to change without notice.*

## Table 1: RENTING

### Shared Rented Accommodation: Average cost for students based on a full year (52 weeks)

	<b>\$ / Week</b>	<b>\$ / Year</b>
<b><u>Establishment Cost</u></b>		
<u>Cost per person sharing an unfurnished house/flat with 2 others for 52 weeks</u>		
Bond on one room (one month's rent)	\$140 x 4	\$560
Two weeks' rent in advance		\$280
Telephone connection: \$55 total ÷ 3 people		\$18
General establishment costs (furniture, linen, crockery)		<u>\$500</u>
<b>Total establishment costs</b>		<b><u>\$1,358</u></b>
<b><u>Annual Cost:</u></b>		
Amenities & Services Fee (Full time full year students)		\$120
Books, stationery, equipment, photocopying		<u>\$550</u>
<b>Total annual costs</b>		<b><u>\$670</u></b>
<b><u>Weekly Cost per person</u></b>		
<b>Rent:</b> Average rent for one room	\$140	\$7,280
<b>Food:</b> Lunch, drinks Mon-Fri \$10/day	\$50	\$2,600
Groceries (average)	\$100	\$5,200
<b>Travel:</b> 2 zones	\$15	\$780
<b>Utilities:</b> Gas, Elec., Phone, Water	\$30	\$1,560
<b>Spending Money:</b> medical/dental, clothes, chemist, newspapers, sport, entertainment	<u>\$60</u>	<u>\$3,120</u>
	<b><u>\$395</u></b>	<b><u>\$20,540</u></b>
<b>TOTAL COST FOR YEAR</b> <b>(Establishment + Annual + Weekly)</b>		<b><u>\$22,568</u></b>

## Table 2: RESIDENTIAL COLLEGE

### Residential College: Average cost for student accommodation based on 34 weeks in college and 18 weeks at home

*Please bear in mind that students who cannot return home during vacation periods may incur additional costs during the 18 weeks of vacation.*

	<b>\$ / Week</b>	<b>\$ / Year</b>
<b><u>Establishment Cost</u></b>		
Bond, application fee, enrolment fees, linen, etc.		\$450
<b><u>Annual Cost:</u></b>		
Amenities & Services Fee (Full time full year students)		\$120
Student Club Fee		\$140
Books, stationery, equipment, photocopying		<u>\$550</u>
<b>Total Annual Cost</b>		<b><u>\$1,260</u></b>
<b><u>Weekly Cost:</u></b>		
Each college has its own fee structure, but on average, the weekly charge for board and all meals is (35 weeks per year)	\$300	\$10,500
You need to check with each college for any additional charges.		
<b>Spending Money:</b> medical/dental, clothes, chemist, newspapers, haircuts, sport, entertainment	<u>\$60</u>	<u>\$2,100</u>
<b>Total Average Weekly Cost</b>	<b><u>\$335</u></b>	<b><u>\$12,600</u></b>
<b><u>Vacation Cost for College Students:</u></b>		
Medical/dental, clothes, chemist, newspapers, haircuts, sport, entertainment, etc. for 18 weeks	\$60	\$1,080
Board for 18 weeks	<u>\$45</u>	<u>\$810</u>
<b>Total Vacation Cost</b>	<b><u>\$105</u></b>	<b><u>\$1,890</u></b>
<b>TOTAL COST FOR YEAR (Establishment + Annual + Weekly)</b>		<b><u>\$15,750</u></b>

**Table 3: HOMESTAY ACCOMMODATION**

**Homestay: Average cost for students living in homestay all year (50 weeks)**

	<b><i>\$ / Week</i></b>	<b><i>\$ / Year</i></b>
<b><u>Annual Cost:</u></b>		
Amenities & Services Fee (Full time full year students)		\$120
Books, stationery, equipment, photocopying		<u>\$550</u>
<b>Total Annual Cost:</b>		<b><u>\$670</u></b>
<b><u>Weekly Cost:</u></b>		
Full Board (all meals and accommodation)	\$220	\$11,000
Travel: 2 zones	\$15	\$750
Spending Money: medical/dental, clothes chemist, newspapers, haircuts, sport, entertainment	<u>\$60</u>	<u>\$3,000</u>
<b>Total Weekly Cost</b>	<b><u>\$295</u></b>	<b><u>\$14,750</u></b>
<b>TOTAL COST FOR YEAR (Annual + Weekly)</b>		<b><u>\$15,420</u></b>

**Table 4: AT HOME**

**Home: Average cost for students  
living at home all year (52 weeks)**

	<b><i>\$ / Week</i></b>	<b><i>\$ / Year</i></b>
<b><u>Annual Cost:</u></b>		
Amenities & Services Fee (Full time full year students)		\$120
Books, stationery, equipment, photocopying		<u>\$550</u>
<b>Total Annual Cost:</b>		<b><u>\$670</u></b>
<b><u>Weekly Cost:</u></b>		
Board	\$80	\$4,160
Lunch & drinks Monday-Friday	\$50	\$2,600
Travel: 2 zones	\$15	\$780
Spending Money: medical/dental, clothes chemist, newspapers, haircuts, sport, entertainment	<u>\$60</u>	<u>\$3,120</u>
<b>Total Weekly Cost</b>	<b><u>\$205</u></b>	<b><u>\$10,660</u></b>
<b>TOTAL COST FOR YEAR (Annual + Weekly)</b>		<b><u>\$11,330</u></b>

## FINANCIAL SUPPORT

Student Services understand that from time to time some students will experience difficulties managing their finances or supporting themselves financially.

If you have any difficulties with any aspects of your finance/budget or accommodation needs, or just want more information, you are welcome to contact the Financial Aid/Housing Officer:

Where to find us:

**UWA Student Services**  
**2<sup>nd</sup> Floor, South Wing, Guild Village**

Please do not hesitate to come and see us to find out more about any of our services

To make an appointment  
please call **08 6488 2423**  
email: [housing@uwa.edu.au](mailto:housing@uwa.edu.au)

Visit our website at: <http://www.studentservices.uwa.edu.au/>

**Got a Question? Find the Answer....@ [www.ipoint.uwa.edu.au](http://www.ipoint.uwa.edu.au)**

CRICOS Provider Number 00126G